

# \$499,000 - 3351 26 Street, Edmonton

MLS® #E4432974

**\$499,000**

3 Bedroom, 2.50 Bathroom, 1,921 sqft  
Single Family on 0.00 Acres

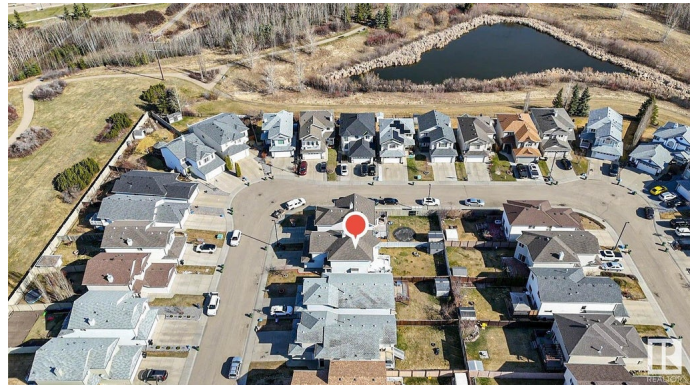
Silver Berry, Edmonton, AB

**!! NEW LISTING !!** Welcome to your new home in the family-friendly community of Silverberry! This well-maintained single-family home features 3 spacious bedrooms, 2.5 bathrooms, and a double attached garage—perfect for families or anyone seeking comfort and functionality. The main floor offers a bright and inviting living area, a kitchen with ample cabinetry, and a cozy dining space ideal for everyday living and entertaining. Step outside to a large extended deck, perfect for BBQs and gatherings, overlooking a spacious backyard—ideal for kids, pets, or future landscaping ideas. Upstairs, you'll find a generous primary suite with an ensuite bath, plus two additional bedrooms and a full bathroom. Located just minutes from grocery stores, schools, playgrounds, walking trails, and recreation centres, with easy access to major roads and transit, this home blends convenience with comfort.

Built in 2003

## Essential Information

MLS® #	E4432974
Price	\$499,000
Bedrooms	3
Bathrooms	2.50



Full Baths	2
Half Baths	1
Square Footage	1,921
Acres	0.00
Year Built	2003
Type	Single Family
Sub-Type	Detached Single Family
Style	2 Storey
Status	Active

### **Community Information**

Address	3351 26 Street
Area	Edmonton
Subdivision	Silver Berry
City	Edmonton
County	ALBERTA
Province	AB
Postal Code	T6T 1Z4

### **Amenities**

Amenities	Detectors Smoke, Fire Pit, Patio
Parking	Double Garage Attached

### **Interior**

Interior Features	ensuite bathroom
Appliances	Dishwasher-Built-In, Dryer, Garage Opener, Hood Fan, Refrigerator, Stove-Electric, Washer, Window Coverings
Heating	Forced Air-1, Natural Gas
Stories	2
Has Basement	Yes
Basement	Full, Unfinished

### **Exterior**

Exterior	Wood, Vinyl
Exterior Features	Playground Nearby, Schools, Shopping Nearby
Roof	Asphalt Shingles
Construction	Wood, Vinyl
Foundation	Concrete Perimeter

### **Additional Information**

Date Listed April 25th, 2025

Days on Market 2

Zoning Zone 30

DATA IS DEEMED RELIABLE BUT IS NOT GUARANTEED ACCURATE BY THE REALTORS® ASSOCIATION OF EDMONTON. COPYRIGHT 2025 BY THE REALTORS® ASSOCIATION OF EDMONTON. ALL RIGHTS RESERVED. Trademarks are owned or controlled by the Canadian Real Estate Association (CREA) and identify real estate professionals who are members of CREA (REALTOR®, REALTORS®) and/or the quality of services they provide (MLS®, Multiple Listing Service®)

Listing information last updated on April 26th, 2025 at 9:31pm MDT