

\$80,000 - 107 10811 115 Street, Edmonton

MLS® #E4431746

\$80,000

1 Bedroom, 1.00 Bathroom, 603 sqft
Condo / Townhouse on 0.00 Acres

Queen Mary Park, Edmonton, AB

AFFORDABLE & TURN KEY! Comfortable 1 bed 1 bath, with upgraded stainless steel appliances, plus a convection stove, new paint and a spacious bedroom with plenty of storage! **LOW Condo Fees, Low Taxes, and a low mortgage payment, great starter home opportunity!** Located on a quiet tree lined street, close to shopping, and easy access to NAIT, and MacEwan. Comes with one, energized parking stall.

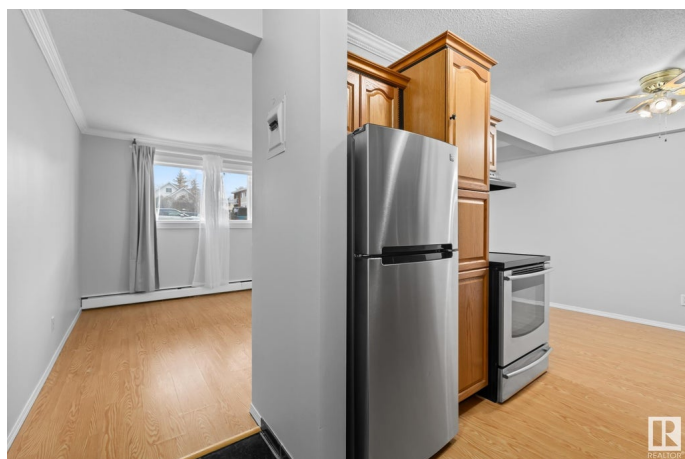
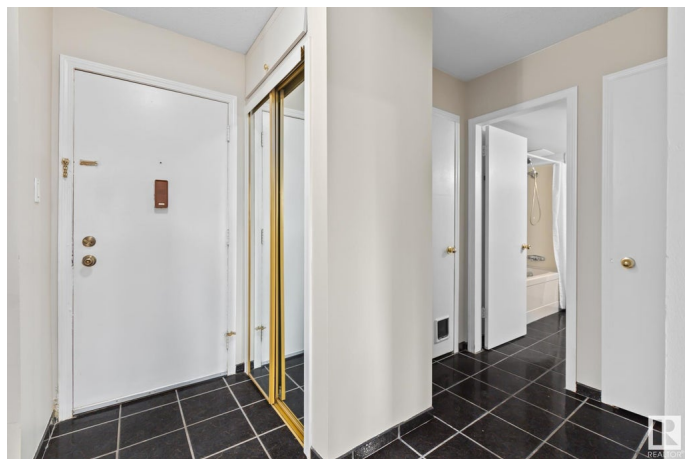
Built in 1968

Essential Information

| | |
|----------------|------------------------|
| MLS® # | E4431746 |
| Price | \$80,000 |
| Bedrooms | 1 |
| Bathrooms | 1.00 |
| Full Baths | 1 |
| Square Footage | 603 |
| Acres | 0.00 |
| Year Built | 1968 |
| Type | Condo / Townhouse |
| Sub-Type | Lowrise Apartment |
| Style | Single Level Apartment |
| Status | Active |

Community Information

Address 107 10811 115 Street



| | |
|-------------|-----------------|
| Area | Edmonton |
| Subdivision | Queen Mary Park |
| City | Edmonton |
| County | ALBERTA |
| Province | AB |
| Postal Code | T5H 3L2 |

Amenities

Amenities Off Street Parking, On Street Parking, Intercom, No Animal Home, No Smoking Home, Security Door, Storage-Locker Room, Vinyl Windows

Parking Spaces 1

Parking Stall

Interior

Appliances Dishwasher-Built-In, Hood Fan, Refrigerator, Stove-Electric

Heating Baseboard, Natural Gas

of Stories 3

Stories 1

Has Basement Yes

Basement None, No Basement

Exterior

Exterior Wood, Brick, Stucco

Exterior Features Back Lane, No Through Road, Private Setting, Public Transportation, Schools, Shopping Nearby, Treed Lot

Roof Flat

Construction Wood, Brick, Stucco

Foundation Concrete Perimeter

Additional Information

Date Listed April 18th, 2025

Days on Market 2

Zoning Zone 08

Condo Fee \$343

DATA IS DEEMED RELIABLE BUT IS NOT GUARANTEED ACCURATE BY THE REALTORS® ASSOCIATION OF EDMONTON. COPYRIGHT 2025 BY THE REALTORS® ASSOCIATION OF EDMONTON. ALL RIGHTS RESERVED. Trademarks are owned or controlled by the Canadian Real Estate Association (CREA) and identify real estate professionals who are members of CREA (REALTOR®, REALTORS®) and/or the quality of services they provide (MLS®, Multiple Listing Service®)

Listing information last updated on April 20th, 2025 at 4:32am MDT