

## \$699,900 - 1432 Latta Court, Edmonton

MLS® #E4431326

**\$699,900**

5 Bedroom, 3.50 Bathroom, 2,107 sqft

Single Family on 0.00 Acres

Leger, Edmonton, AB

Tucked away in a quiet cul-de-sac, this beautiful home sits on a massive southwest-facing pie-shaped lot—perfect for play and family BBQs on the oversized composite deck! Inside, enjoy a custom floorplan with a mudroom (washer/dryer moved here but secondary hook ups in the basement as well), a main floor office/den, and an open-concept island kitchen with quartz counters, stainless appliances, and corner pantry. The vaulted living room with custom gas fireplace is made for cozy nights in. Upstairs, the spacious primary retreat features dual vanities, a soaker tub, and a stand-up shower. Kids will love the huge bedrooms with a fun Jack & Jill bathroom! Fully finished basement offers a rec room/play area, 2 more bedrooms, and a bathroom. Central A/C, newer roof (2021), and thoughtful upgrades throughout including new closet organizers. Move in before summer starts and enjoy this warm, family-friendly community close to parks, schools, and shopping!

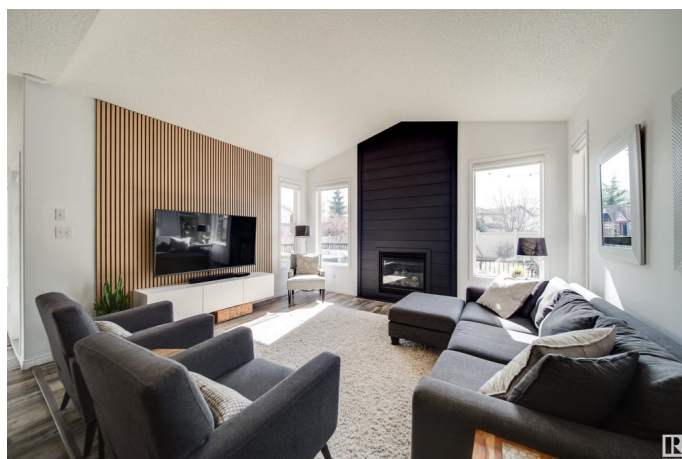
Built in 2004

### Essential Information

MLS® # E4431326

Price \$699,900

Bedrooms 5



Bathrooms	3.50
Full Baths	3
Half Baths	1
Square Footage	2,107
Acres	0.00
Year Built	2004
Type	Single Family
Sub-Type	Detached Single Family
Style	2 Storey
Status	Active

### Community Information

Address	1432 Latta Court
Area	Edmonton
Subdivision	Leger
City	Edmonton
County	ALBERTA
Province	AB
Postal Code	T6R 3N2

### Amenities

Amenities	Air Conditioner, Deck
Parking Spaces	4
Parking	Double Garage Attached

### Interior

Interior Features	ensuite bathroom
Appliances	Air Conditioning-Central, Dishwasher-Built-In, Dryer, Garage Control, Garage Opener, Refrigerator, Stove-Electric, Washer, Window Coverings, TV Wall Mount
Heating	Forced Air-1, Natural Gas
Fireplace	Yes
Fireplaces	See Remarks
Stories	3
Has Basement	Yes
Basement	Full, Finished

### Exterior

Exterior	Wood, Brick, Vinyl
----------	--------------------

Exterior Features	Cul-De-Sac, Landscaped, Playground Nearby, Schools, Shopping Nearby
Roof	Asphalt Shingles
Construction	Wood, Brick, Vinyl
Foundation	Concrete Perimeter

**Additional Information**

Date Listed	April 17th, 2025
Days on Market	2
Zoning	Zone 14

DATA IS DEEMED RELIABLE BUT IS NOT GUARANTEED ACCURATE BY THE REALTORS® ASSOCIATION OF EDMONTON. COPYRIGHT 2025 BY THE REALTORS® ASSOCIATION OF EDMONTON. ALL RIGHTS RESERVED.Trademarks are owned or controlled by the Canadian Real Estate Association (CREA) and identify real estate professionals who are members of CREA (REALTOR®, REALTORS®) and/or the quality of services they provide (MLS®, Multiple Listing Service®)

Listing information last updated on April 19th, 2025 at 7:32pm MDT