

\$524,900 - 6136 12 Avenue, Edmonton

MLS® #E4430011

\$524,900

4 Bedroom, 2.50 Bathroom, 1,545 sqft

Single Family on 0.00 Acres

Walker, Edmonton, AB

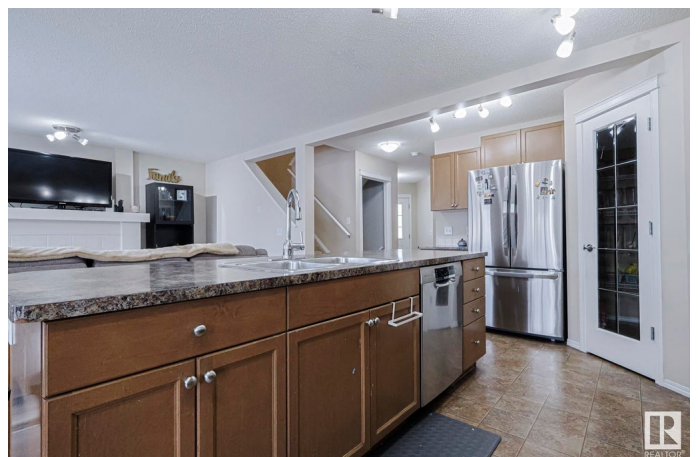
Welcome to Walker, A true gem nested in Southeast Edmonton. This 4-bedrooms single family home boasts nearly 2200sq of comfortable living space, and displays a perfect blend of elegance and functionality. It offers an open concept living area and fully updated kitchen on the main floor. 3 generously sized bedrooms on the upper level. A fully finished basement that offers an additional bedroom/office and a recreational area to cater your family's needs for entertainment. Step outside, you will be amazed by this tree-lined backyard that offers a generously sized deck and well maintained vegetarians. It is Ready for your summer-BBQing and fun events. This home has received numerous updates in recent years that includes a new furnace(2023), Hot Water Tank(2020), Washer/Dryer(2023), Fridge(2024), Garage Door & Opener(2023.) . Ensuring energy efficiency and a peace of mind for its new owners. Located in a family-friendly neighborhood, youâ€™™ll be close to schools, parks, shopping, and all essential amenities.

Built in 2009

Essential Information

MLS® # E4430011

Price \$524,900



Bedrooms	4
Bathrooms	2.50
Full Baths	2
Half Baths	1
Square Footage	1,545
Acres	0.00
Year Built	2009
Type	Single Family
Sub-Type	Detached Single Family
Style	2 Storey
Status	Active

Community Information

Address	6136 12 Avenue
Area	Edmonton
Subdivision	Walker
City	Edmonton
County	ALBERTA
Province	AB
Postal Code	T6X 0M5

Amenities

Amenities	Deck, Detectors Smoke, See Remarks
Parking	Double Garage Attached

Interior

Interior Features	ensuite bathroom
Appliances	Dishwasher-Built-In, Dryer, Hood Fan, Refrigerator, Storage Shed, Stove-Gas, Washer, Window Coverings
Heating	Forced Air-1, Natural Gas
Fireplace	Yes
Fireplaces	Mantel
Stories	3
Has Basement	Yes
Basement	Full, Finished

Exterior

Exterior	Wood, Vinyl
Exterior Features	Fenced, Landscaped, See Remarks

Roof	Asphalt Shingles
Construction	Wood, Vinyl
Foundation	Concrete Perimeter

School Information

Elementary	Shauna May Seneca School
Middle	Shauna May Seneca School
High	Elder Dr. Francis Whiskey

Additional Information

Date Listed	April 10th, 2025
Days on Market	9
Zoning	Zone 53

DATA IS DEEMED RELIABLE BUT IS NOT GUARANTEED ACCURATE BY THE REALTORS® ASSOCIATION OF EDMONTON. COPYRIGHT 2025 BY THE REALTORS® ASSOCIATION OF EDMONTON. ALL RIGHTS RESERVED. Trademarks are owned or controlled by the Canadian Real Estate Association (CREA) and identify real estate professionals who are members of CREA (REALTOR®, REALTORS®) and/or the quality of services they provide (MLS®, Multiple Listing Service®)

Listing information last updated on April 19th, 2025 at 9:17pm MDT