

Courtesy Of Luke R Ruttle Of The Good Real Estate Company

\$209,900 - 105 11415 100 Avenue, Edmonton

MLS® #E4429943

\$209,900

1 Bedroom, 1.00 Bathroom, 821 sqft
Condo / Townhouse on 0.00 Acres

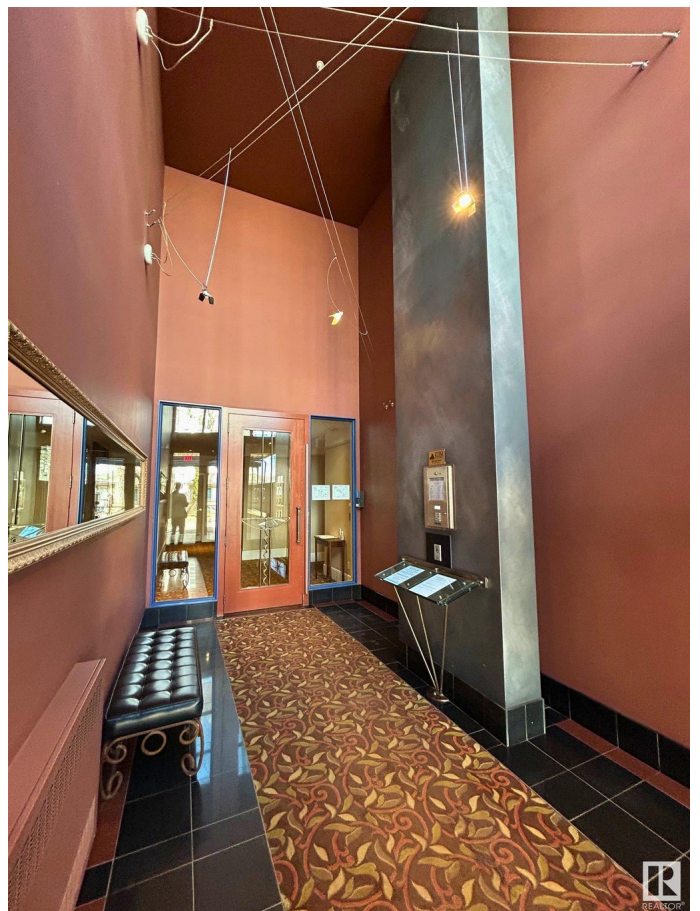
WÃ@hkwÃªntÃ´win, Edmonton, AB

Welcome to The Metropal and this beautifully designed condo, where stylish Art Deco living meets modern comfort. Enjoy open-concept living with a spacious kitchen, dining, and living area, perfect for entertaining or relaxing at home. Enjoy 9â€™™ ceilings and a cozy gas fireplace. Step through French doors into the well-sized primary bedroom, featuring two closets and a window that overlooks your own private walled patio. The modern kitchen showcases sleek white lacquer cabinetry, an eating bar, stainless steel appliances, ample storage, and stylish glass block accents. The tiled bathroom is both functional and elegant, while in-suite laundry adds everyday convenience. Step outside to your private 420 ftÂ² patio for gardening, barbecuing, and entertaining. Extras include underground parking, a separate storage locker, and unbeatable access to downtown, shopping, the river valley, and public transit. Stylish, spacious, and steps from everything downtown living has to offer.

Built in 1993

Essential Information

MLS® #	E4429943
Price	\$209,900
Bedrooms	1



Bathrooms	1.00
Full Baths	1
Square Footage	821
Acres	0.00
Year Built	1993
Type	Condo / Townhouse
Sub-Type	Lowrise Apartment
Style	Single Level Apartment
Status	Active

Community Information

Address	105 11415 100 Avenue
Area	Edmonton
Subdivision	WÃ©hkwÃ©ntÃ©win
City	Edmonton
County	ALBERTA
Province	AB
Postal Code	T5K 0J5

Amenities

Amenities	Ceiling 9 ft., No Animal Home, No Smoking Home, Patio, Natural Gas BBQ Hookup
Parking	Heated, Underground

Interior

Appliances	Dishwasher-Built-In, Dryer, Microwave Hood Fan, Refrigerator, Stove-Electric, Washer
Heating	In Floor Heat System, Natural Gas
Fireplace	Yes
Fireplaces	Tile Surround
# of Stories	4
Stories	1
Has Basement	Yes
Basement	None, No Basement

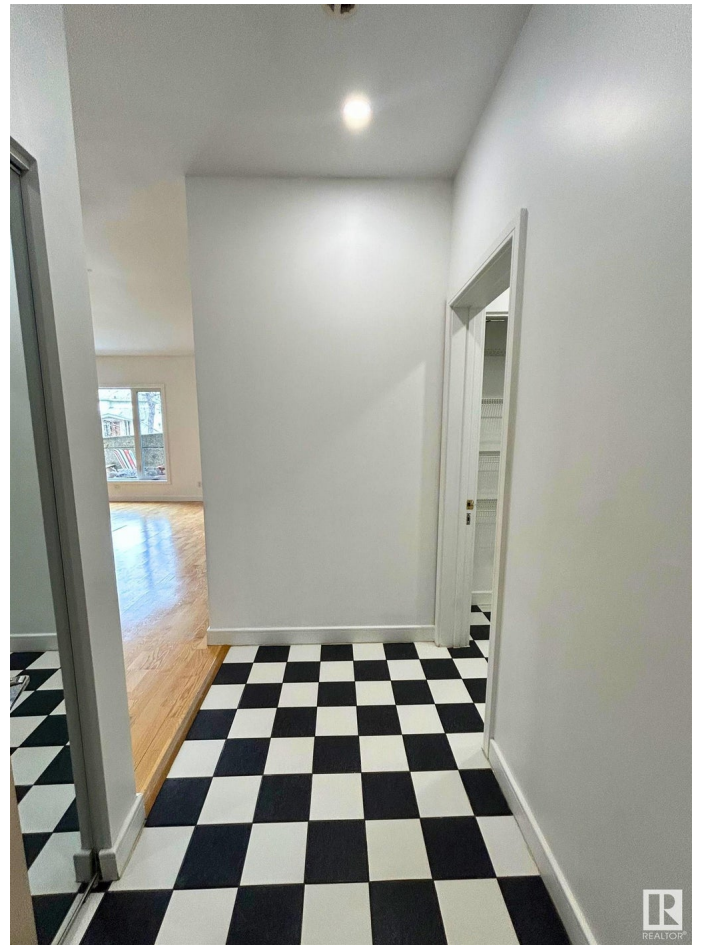
Exterior

Exterior	Wood, Concrete
Exterior Features	Landscaped, Park/Reserve, Playground Nearby, Public Swimming Pool, Public Transportation, Schools, Shopping Nearby, See Remarks

Roof Tar & Gravel
Construction Wood, Concrete
Foundation Concrete Perimeter

Additional Information

Date Listed April 9th, 2025
Days on Market 11
Zoning Zone 12
Condo Fee \$757



DATA IS DEEMED RELIABLE BUT IS NOT GUARANTEED ACCURATE BY THE REALTORS® ASSOCIATION OF EDMONTON. COPYRIGHT 2025 BY THE REALTORS® ASSOCIATION OF EDMONTON. ALL RIGHTS RESERVED. Trademarks are owned or controlled by the Canadian Real Estate Association (CREA) and identify real estate professionals who are members of CREA (REALTOR®, REALTORS®) and/or the quality of services they provide (MLS®, Multiple Listing Service®)

Listing information last updated on April 20th, 2025 at 4:32am MDT