

\$674,900 - 1379 Siskin Wynd, Edmonton

MLS® #E4429328

\$674,900

3 Bedroom, 2.50 Bathroom, 2,395 sqft
Single Family on 0.00 Acres

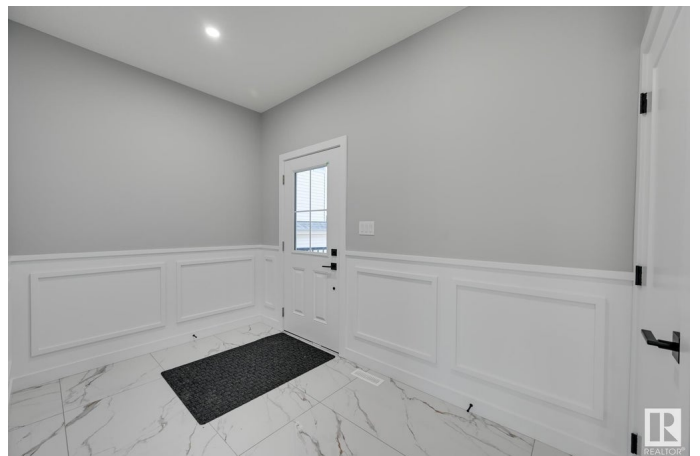
Kinglet Gardens, Edmonton, AB

Welcome to this brand new 2395 SQFT 2 story New Castle 1B model by award winning Blackstone Homes, backing on to the PARK. This home won the best home with BILD 2023. Upon entering, you will be welcomed by nice foyer leading to a much needed den, mudroom with built ins with walk through pantry leading to chef dream kitchen offering side by side fridge/freezer with huge island. Dining area with wet bar. Great room offers 18 feet open to below ceiling with linear fireplace finished with tiles/wood & 3D ceiling. The 2nd floor offers 3 good size bedrooms, 2 baths, bonus room. Master bedroom is huge with beautiful spa like ensuite offering double sinks, shower & freestanding tub, huge WIC. Other features - Separate entrance, 9' main & basement ceiling, MDF shelving, Maple railing, Black plumbing & Lighting fixtures, Feature wall in master & bonus, upgraded quartz throughout, Built in appliances, New Home Warranty. Great location - Easy access to Yellowhead/Anthony Henday, close to shopping & playground.

Built in 2023

Essential Information

MLS® #	E4429328
Price	\$674,900



Bedrooms	3
Bathrooms	2.50
Full Baths	2
Half Baths	1
Square Footage	2,395
Acres	0.00
Year Built	2023
Type	Single Family
Sub-Type	Detached Single Family
Style	2 Storey
Status	Active

Community Information

Address	1379 Siskin Wynd
Area	Edmonton
Subdivision	Kinglet Gardens
City	Edmonton
County	ALBERTA
Province	AB
Postal Code	T5S 0R3

Amenities

Amenities	Bar, Carbon Monoxide Detectors, Ceiling 9 ft., Closet Organizers, No Animal Home, No Smoking Home, Vaulted Ceiling, Vinyl Windows, Wet Bar, 9 ft. Basement Ceiling
Parking	Double Garage Attached

Interior

Interior Features	ensuite bathroom
Appliances	Dishwasher-Built-In, Dryer, Freezer, Hood Fan, Oven-Built-In, Oven-Microwave, Refrigerator, Stove-Countertop Gas, Washer
Heating	Forced Air-1, Natural Gas
Fireplace	Yes
Fireplaces	Insert
Stories	2
Has Basement	Yes
Basement	Full, Unfinished

Exterior

Exterior	Wood, Stone, Vinyl
Exterior Features	Backs Onto Park/Trees, Golf Nearby, No Back Lane, Not Fenced, Not Landscaped, Park/Reserve, Picnic Area, Playground Nearby, Shopping Nearby
Roof	Asphalt Shingles
Construction	Wood, Stone, Vinyl
Foundation	Concrete Perimeter

Additional Information

Date Listed	April 5th, 2025
Days on Market	11
Zoning	Zone 59
HOA Fees Freq.	Annually

DATA IS DEEMED RELIABLE BUT IS NOT GUARANTEED ACCURATE BY THE REALTORS® ASSOCIATION OF EDMONTON. COPYRIGHT 2025 BY THE REALTORS® ASSOCIATION OF EDMONTON. ALL RIGHTS RESERVED. Trademarks are owned or controlled by the Canadian Real Estate Association (CREA) and identify real estate professionals who are members of CREA (REALTOR®, REALTORS®) and/or the quality of services they provide (MLS®, Multiple Listing Service®)

Listing information last updated on April 16th, 2025 at 1:32pm MDT