

Courtesy Of Mani Bagga and Gurpreet S Ghatehora Of Royal Lepage Magna

\$648,800 - 10221 151 Street, Edmonton

MLS® #E4428663

\$648,800

6 Bedroom, 4.00 Bathroom, 2,037 sqft
Single Family on 0.00 Acres

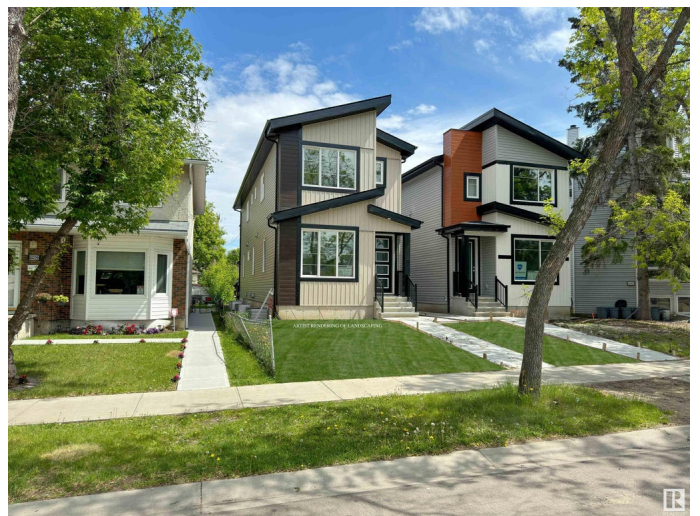
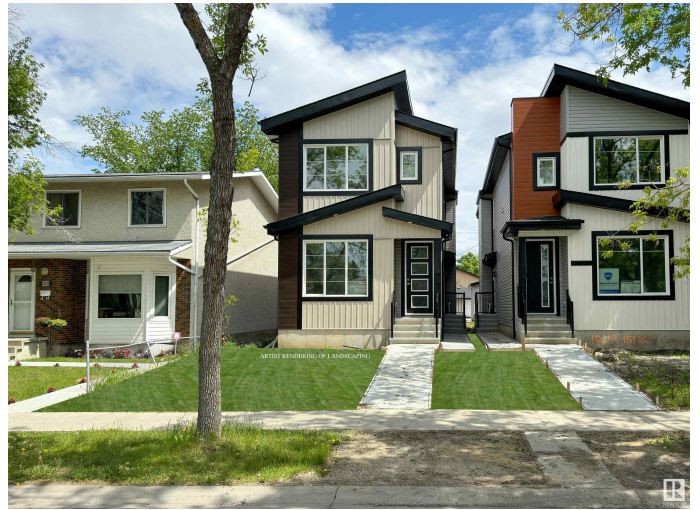
Canora, Edmonton, AB

LEGAL SUITE!! This stunning new build is located a quiet, tree-lined street boasting almost 2900 sqft of total living space! Meticulously-built home features 6 large **BEDROOMS** & 4 full baths, with a **SEPARATE ENTRANCE** to access the **FULLY FINISHED BASEMENT w/ SECOND KITCHEN!** You are welcomed by the spacious foyer leading you to the large living room w/ a feature wall & modern electric fireplace durable vinyl plank floors, a 4PC BATH & BEDROOM! The dining gives you the luxury of high-gloss **MARBLE FLOORING, MODERN CABINETRY, A BREAKFAST NOOK, GLASS TILE BACKSPLASH & Quartz COUNTERTOPS!** The eating area leads you to the deck, has double **DETACHED GARAGE!** Upstairs features a **LOFT/BONUS ROOM**, 3 large bedrooms including the Primary with 5-pc ensuite + 1 common bath. **LEGAL SUTIE BASEMENT** has a **SEPARATE SIDE ENTRANCE**, 2 large bedrms, 1 full bath, a **KITCHEN**, a **REC ROOM** & utility room! Seller offers \$5000 Appliance Credit & **NEW HOME WARRANTY!** Outside pics are digitally altered. Some pictures are virtually staged.

Built in 2024

Essential Information

MLS® # E4428663



Price	\$648,800
Bedrooms	6
Bathrooms	4.00
Full Baths	4
Square Footage	2,037
Acres	0.00
Year Built	2024
Type	Single Family
Sub-Type	Detached Single Family
Style	2 Storey
Status	Active

Community Information

Address	10221 151 Street
Area	Edmonton
Subdivision	Canora
City	Edmonton
County	ALBERTA
Province	AB
Postal Code	T5P 1T6

Amenities

Amenities	Closet Organizers, Deck, No Animal Home, No Smoking Home
Parking Spaces	2
Parking	Double Garage Detached

Interior

Interior Features	ensuite bathroom
Appliances	Garage Control, Garage Opener, Hood Fan
Heating	Forced Air-2, Natural Gas
Fireplace	Yes
Fireplaces	Marble Surround
Stories	3
Has Basement	Yes
Basement	Full, Finished

Exterior

Exterior	Wood, Vinyl
Exterior Features	Back Lane, Fenced, Public Transportation, Schools, Shopping Nearby

Roof	Asphalt Shingles
Construction	Wood, Vinyl
Foundation	Concrete Perimeter

School Information

Elementary	Brightview School
Middle	Brittania School
High	Ross Shephard School

Additional Information

Date Listed	April 2nd, 2025
Days on Market	2
Zoning	Zone 21

DATA IS DEEMED RELIABLE BUT IS NOT GUARANTEED ACCURATE BY THE REALTORS® ASSOCIATION OF EDMONTON. COPYRIGHT 2025 BY THE REALTORS® ASSOCIATION OF EDMONTON. ALL RIGHTS RESERVED. Trademarks are owned or controlled by the Canadian Real Estate Association (CREA) and identify real estate professionals who are members of CREA (REALTOR®, REALTORS®) and/or the quality of services they provide (MLS®, Multiple Listing Service®)

Listing information last updated on April 4th, 2025 at 3:17pm MDT