

Courtesy Of Marianne Horvat Of RE/MAX River City

# \$749,900 - Hwy 2a And Rr 245, Rural Leduc County

MLS® #E4426993

**\$749,900**

0 Bedroom, 0.00 Bathroom,  
Rural on 130.85 Acres

None, Rural Leduc County, AB

Here's your chance to own a peice of property with lots of possibilities.130.85 acres that include 70 acres cultivated land with the balance in bush and pasture. A great building site. Large dugout for animals. Close to Millet and Leduc and just off the Hwy.

## Essential Information

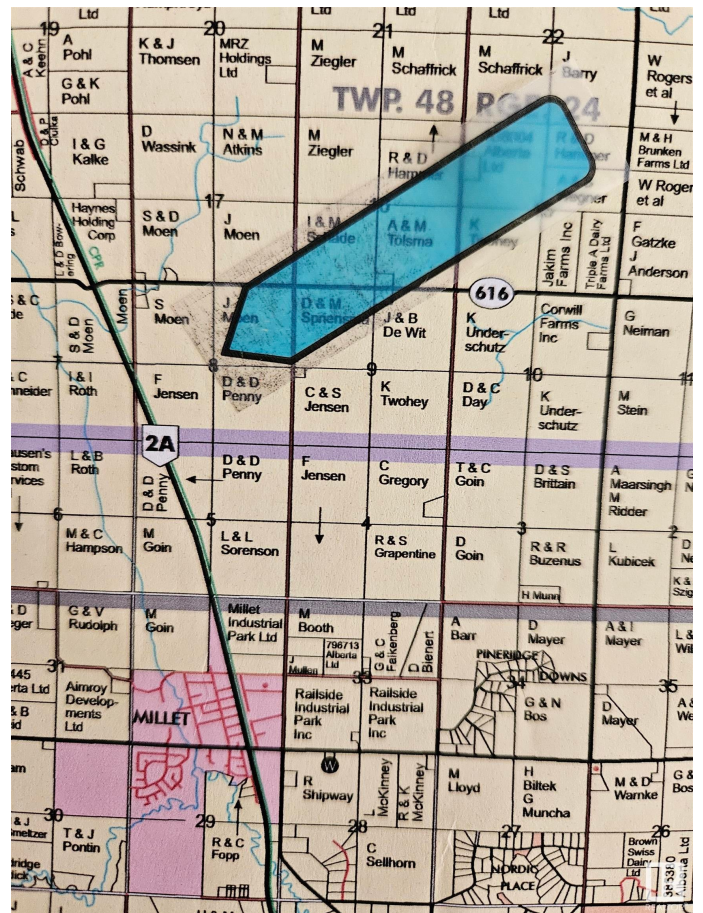
|           |                 |
|-----------|-----------------|
| MLS® #    | E4426993        |
| Price     | \$749,900       |
| Bathrooms | 0.00            |
| Acres     | 130.85          |
| Type      | Rural           |
| Sub-Type  | Vacant Lot/Land |
| Status    | Active          |

## Community Information

|             |                    |
|-------------|--------------------|
| Address     | Hwy 2a And Rr 245  |
| Area        | Rural Leduc County |
| Subdivision | None               |
| City        | Rural Leduc County |
| County      | ALBERTA            |
| Province    | AB                 |
| Postal Code | T0C 1Z0            |

## Exterior

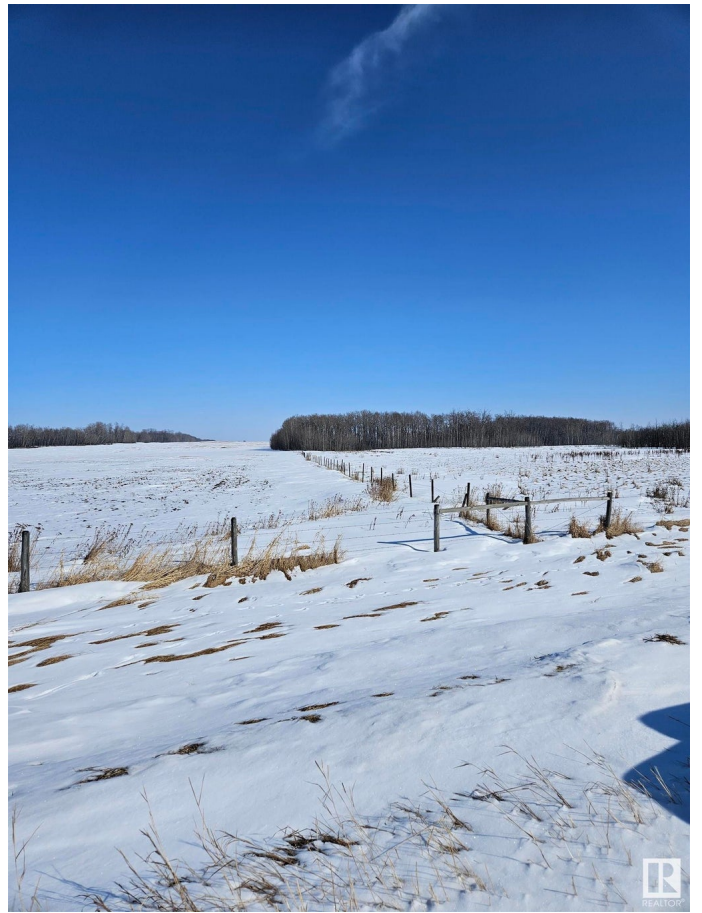
Exterior Features Airport Nearby, Fenced, Flat Site, Golf Nearby, Shopping Nearby, See



Remarks

**Additional Information**

Date Listed            March 21st, 2025  
Days on Market        14  
Zoning                    Zone 80



DATA IS DEEMED RELIABLE BUT IS NOT GUARANTEED ACCURATE BY THE REALTORS® ASSOCIATION OF EDMONTON. COPYRIGHT 2025 BY THE REALTORS® ASSOCIATION OF EDMONTON. ALL RIGHTS RESERVED. Trademarks are owned or controlled by the Canadian Real Estate Association (CREA) and identify real estate professionals who are members of CREA (REALTOR®, REALTORS®) and/or the quality of services they provide (MLS®, Multiple Listing Service®)

Listing information last updated on April 4th, 2025 at 7:02am MDT