

\$2,299,900 - 10011 162 Street, Edmonton

MLS® #E4426894

\$2,299,900

4 Bedroom, 3.50 Bathroom, 4,388 sqft
Single Family on 0.00 Acres

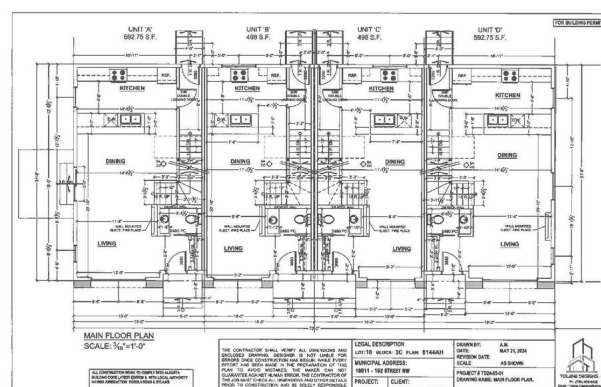
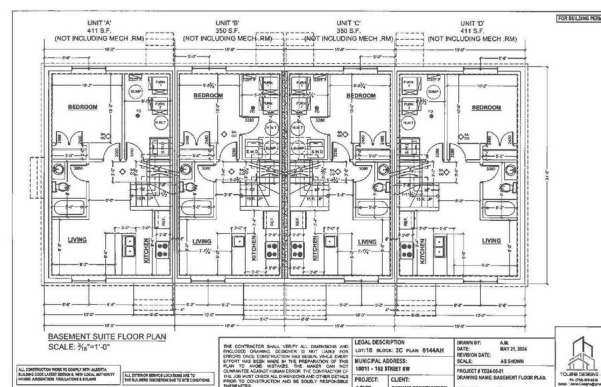
Glenwood (Edmonton), Edmonton, AB

Prime Investment Opportunity: Unique Four-Plex w/ 8 units, offering a total of 14 bedrooms & 16 bathrooms. This impressive multi-family property offers a distinctive layout designed for flexibility & strong income potential. The building features 4 main (above-grade) units & an additional 4 legal basement suites—all w/ separate entrances. The open concept main floor features a generous kitchen w/ an inviting dining area. The living room has a electric f/p. A 2pce bath completes the main floor. The 2nd floor of each end unit has 3 spacious bedrooms & 2 full baths. The inside units have 2 primary bedrooms each w/ their own ensuite. Each basement suite features a living room, full kitchen, bedroom & a 4pce bath w/ their own separate entrance, ensuring privacy and independent rental potential. Each unit has a single detached garage. Close to shopping, transit & schools. Whether you're searching for a turnkey rental income investment or a versatile space for multi-generational living, this property stands out!

Built in 2025

Essential Information

MLS® # E4426894
Price \$2,299,900



Bedrooms	4
Bathrooms	3.50
Full Baths	3
Half Baths	1
Square Footage	4,388
Acres	0.00
Year Built	2025
Type	Single Family
Sub-Type	4PLEX
Style	2 Storey
Status	Active

Community Information

Address	10011 162 Street
Area	Edmonton
Subdivision	Glenwood (Edmonton)
City	Edmonton
County	ALBERTA
Province	AB
Postal Code	T5P 3L5

Amenities

Amenities	See Remarks
Parking	Single Garage Detached

Interior

Interior Features	ensuite bathroom
Appliances	Dishwasher-Built-In, Garage Control, Garage Opener, Hood Fan, Oven-Microwave, Dryer-Two, Refrigerators-Two, Stoves-Two, Washers-Two
Heating	Forced Air-1, Natural Gas
Fireplace	Yes
Fireplaces	Wall Mount
Stories	3
Has Basement	Yes
Basement	Full, Finished

Exterior

Exterior	Wood, Metal, Vinyl, Stucco
----------	----------------------------

Exterior Features	Fenced, Landscaped, Public Transportation, Schools, Shopping Nearby
Roof	Asphalt Shingles
Construction	Wood, Metal, Vinyl, Stucco
Foundation	Concrete Perimeter

Additional Information

Date Listed March 21st, 2025

Days on Market 14

Zoning Zone 22

DATA IS DEEMED RELIABLE BUT IS NOT GUARANTEED ACCURATE BY THE REALTORS® ASSOCIATION OF EDMONTON. COPYRIGHT 2025 BY THE REALTORS® ASSOCIATION OF EDMONTON. ALL RIGHTS RESERVED. Trademarks are owned or controlled by the Canadian Real Estate Association (CREA) and identify real estate professionals who are members of CREA (REALTOR®, REALTORS®) and/or the quality of services they provide (MLS®, Multiple Listing Service®)

Listing information last updated on April 4th, 2025 at 12:02pm MDT