

# \$480,000 - 9106 153 Street, Edmonton

MLS® #E4426764

**\$480,000**

5 Bedroom, 2.00 Bathroom, 971 sqft  
Single Family on 0.00 Acres

Jasper Park, Edmonton, AB

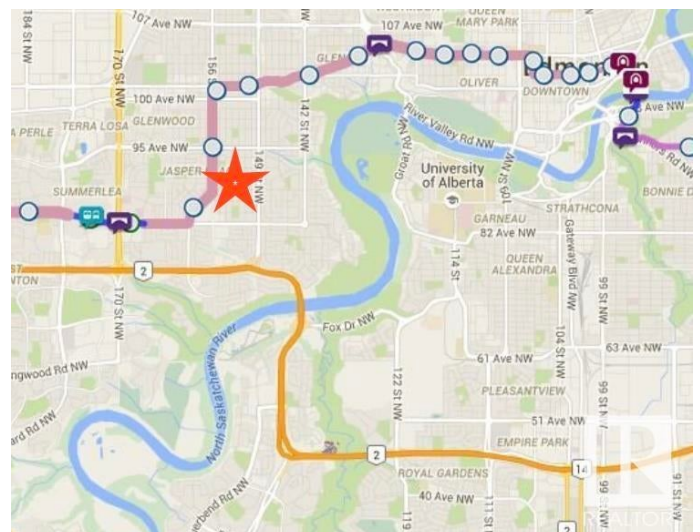
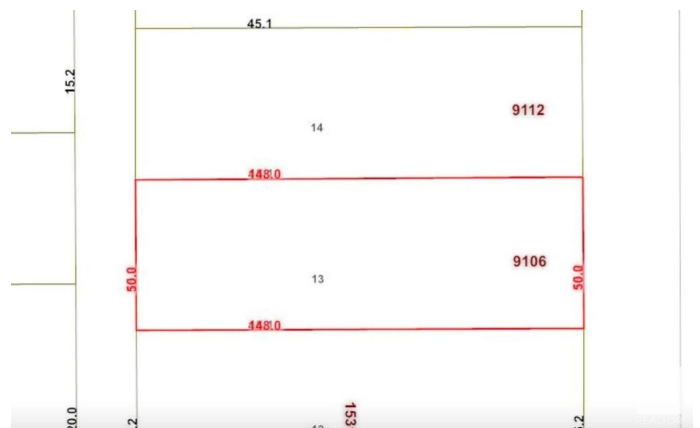
Attention Families, Developers and Investors!  
This well-maintained home on a 50' x 148' lot in Jasper Park offers 687 sq/m of prime redevelopment potential. Featuring a double detached garage, west-facing backyard, front driveway, and rear alley access, it's ideal for families, tenants, or developers seeking their next multi-unit project. Conveniently located near West Edmonton Mall, Whitemud Drive, Downtown, and the upcoming West Valley LRT line. Don't miss this excellent opportunity!

Built in 1959

## Essential Information

|                |                        |
|----------------|------------------------|
| MLS® #         | E4426764               |
| Price          | \$480,000              |
| Bedrooms       | 5                      |
| Bathrooms      | 2.00                   |
| Full Baths     | 2                      |
| Square Footage | 971                    |
| Acres          | 0.00                   |
| Year Built     | 1959                   |
| Type           | Single Family          |
| Sub-Type       | Detached Single Family |
| Style          | Bungalow               |
| Status         | Active                 |

## Community Information



|             |                 |
|-------------|-----------------|
| Address     | 9106 153 Street |
| Area        | Edmonton        |
| Subdivision | Jasper Park     |
| City        | Edmonton        |
| County      | ALBERTA         |
| Province    | AB              |
| Postal Code | T5R 1P6         |

### **Amenities**

|                |  |
|----------------|--|
| Amenities      | Deck, No Animal Home, No Smoking Home, Sauna; Swirlpool; Steam, Vinyl Windows, See Remarks |
| Parking Spaces | 6  |
| Parking        | Double Garage Detached, Front Drive Access, Parking Pad Cement/Paved                       |

### **Interior**

|                   |  |
|-------------------|--|
| Interior Features | ensuite bathroom   |
| Appliances        | Dishwasher-Built-In, Dryer, Hood Fan, Refrigerator, Storage Shed, Stove-Electric, Washer, Window Coverings |
| Heating           | Forced Air-1, Natural Gas  |
| Stories           | 2  |
| Has Basement      | Yes  |
| Basement          | Full, Finished   |

### **Exterior**

|                   |   |
|-------------------|---|
| Exterior          | Wood, Metal   |
| Exterior Features | Back Lane, Fenced, Flat Site, Fruit Trees/Shrubs, Playground Nearby, Public Transportation, Schools, Shopping Nearby, See Remarks |
| Roof              | Asphalt Shingles  |
| Construction      | Wood, Metal   |
| Foundation        | Concrete Perimeter  |

### **Additional Information**

|                |                  |
|----------------|------------------|
| Date Listed    | March 21st, 2025 |
| Days on Market | 30               |
| Zoning         | Zone 22          |

DATA IS DEEMED RELIABLE BUT IS NOT GUARANTEED ACCURATE BY THE REALTORS® ASSOCIATION OF EDMONTON. COPYRIGHT 2025 BY THE REALTORS® ASSOCIATION OF EDMONTON. ALL RIGHTS RESERVED. Trademarks are owned or controlled by the Canadian Real Estate Association (CREA) and identify real estate professionals who are members of CREA (REALTOR®, REALTORS®) and/or the quality of services they

provide (MLS® , Multiple Listing Service®)

Listing information last updated on April 20th, 2025 at 6:47am MDT