

# **\$849,900 - 242 52009 Rge Road 214, Rural Strathcona County**

MLS® #E4425465

**\$849,900**

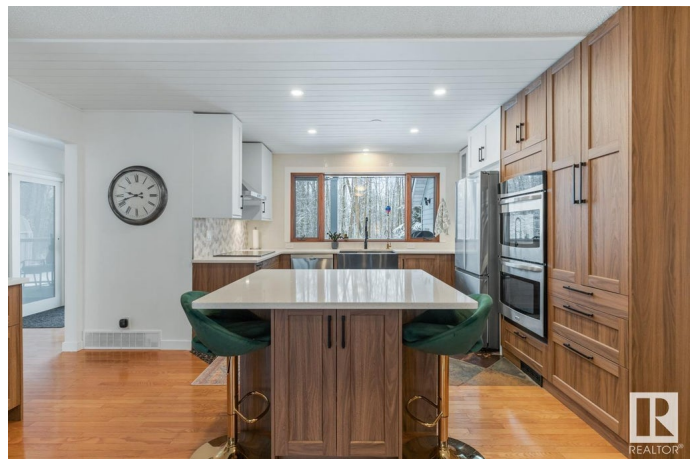
5 Bedroom, 3.50 Bathroom, 2,970 sqft  
Rural on 3.26 Acres

Wildwood Village, Rural Strathcona County,  
AB

Welcome to a private oasis in Wildwood Village 12mins from Sherwood Park, where you will find this beautifully updated family home featuring 5 bdrms & 3.5 baths. Stunning private entry gate & Covered front verandah invites you in to find a spacious entry, where gleaming hardwood floors take you in to the BRAND NEW kitchen that offers plenty of cabinets, S/S appliances with induction stove top, cute coffee bar & quartz island that overlooks the living rm with fireplace. NEW vinyl plank throughout the family & dining rm with cozy 3-sided fireplace. Complementing the layout is laundry, 1/2 bath & mud rm with in floor heat. Upstairs, the vinyl plank is carried throughout the massive, king sized primary with 3 closets & 5pc ensuite, soaker tub & WI shower. 2 more huge bdrms & 4pc bath with claw foot tub complete the upstairs. The basement features a KITCHENETTE, rec room, 2 bdrms, 4pc bath & tons of storage. 3 season room, dbl att garage with in floor heat & lofted workshop, plus walking trails on 3.26 acres.

Built in 1987

## **Essential Information**



MLS® #	E4425465
Price	\$849,900
Bedrooms	5
Bathrooms	3.50
Full Baths	3
Half Baths	1
Square Footage	2,970
Acres	3.26
Year Built	1987
Type	Rural
Sub-Type	Detached Single Family
Style	2 Storey
Status	Active

### **Community Information**

Address	242 52009 Rge Road 214
Area	Rural Strathcona County
Subdivision	Wildwood Village
City	Rural Strathcona County
County	ALBERTA
Province	AB
Postal Code	T8E 1A2

### **Amenities**

Features	Deck, See Remarks
----------	-------------------

### **Interior**

Interior Features	ensuite bathroom
Heating	Forced Air-2, In Floor Heat System, Natural Gas
Fireplace	Yes
Stories	3
Has Basement	Yes
Basement	Full, Finished

### **Exterior**

Exterior	Wood
Exterior Features	Landscaped, Private Setting, See Remarks
Construction	Wood
Foundation	Concrete Perimeter

## Additional Information

Date Listed March 13th, 2025

Days on Market 22

Zoning Zone 80

DATA IS DEEMED RELIABLE BUT IS NOT GUARANTEED ACCURATE BY THE REALTORS® ASSOCIATION OF EDMONTON. COPYRIGHT 2025 BY THE REALTORS® ASSOCIATION OF EDMONTON. ALL RIGHTS RESERVED. Trademarks are owned or controlled by the Canadian Real Estate Association (CREA) and identify real estate professionals who are members of CREA (REALTOR®, REALTORS®) and/or the quality of services they provide (MLS®, Multiple Listing Service®)

Listing information last updated on April 4th, 2025 at 7:17pm MDT