

Courtesy Of John Fraser Of MaxWell Challenge Realty

# \$648,000 - 908 Jordan Crescent, Edmonton

MLS® #E4425413

**\$648,000**

6 Bedroom, 3.00 Bathroom, 1,390 sqft  
Single Family on 0.00 Acres

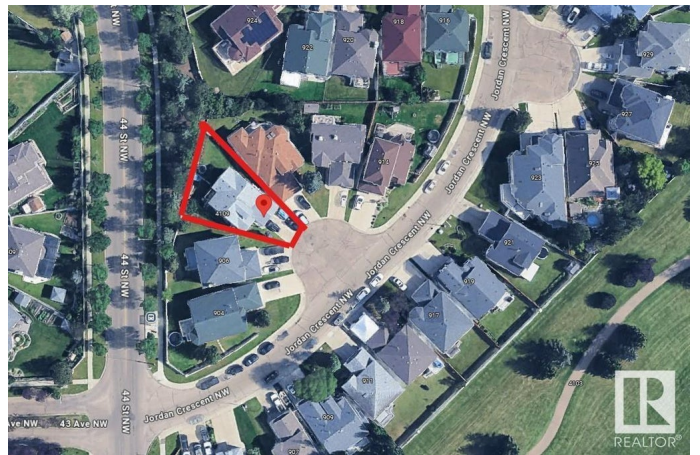
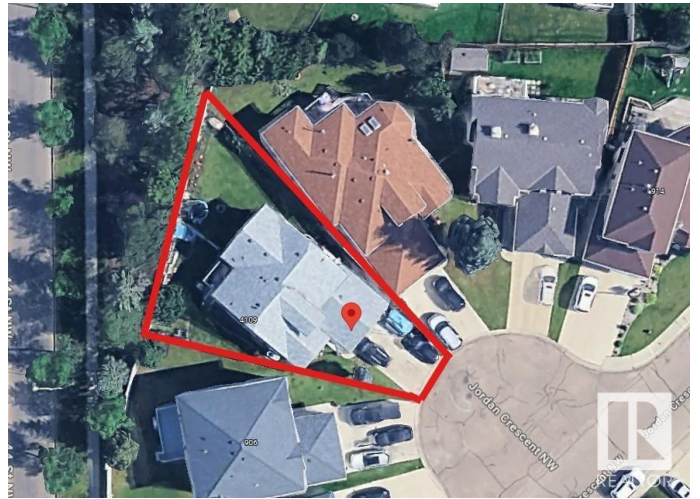
Jackson Heights, Edmonton, AB

Jackson Heights Bilevel in a cul-de-sac! Close to schools, shopping, transit and golf. Minutes to Whitemud and the Henday. French Door to kitchen with exterior door to deck, vaulted (12ft) ceilings, 3 beds up, 3 beds down, second kitchen in fully finished basement with separate entrance, double attached garage and 2 separated yards in back. Great investment property rented to a long term tenant who's now on a month to month lease with significant potential for upside, or give notice and move in 3 months. This property provides many options! 2 pics have been decluttered to show a estimation of rooms if emptied.

Built in 1994

## Essential Information

MLS® #	E4425413
Price	\$648,000
Bedrooms	6
Bathrooms	3.00
Full Baths	3
Square Footage	1,390
Acres	0.00
Year Built	1994
Type	Single Family
Sub-Type	Detached Single Family



Style Bi-Level  
Status Active

### Community Information

Address 908 Jordan Crescent  
Area Edmonton  
Subdivision Jackson Heights  
City Edmonton  
County ALBERTA  
Province AB  
Postal Code T6L 6X5

### Amenities

Amenities Deck, Hot Water Natural Gas, Vaulted Ceiling, Vinyl Windows  
Parking Spaces 4  
Parking Double Garage Attached

### Interior

Interior Features ensuite bathroom  
Appliances Dryer, Washer, Refrigerators-Two, Stoves-Two  
Heating Forced Air-1, Natural Gas  
Stories 2  
Has Basement Yes  
Basement Full, Finished

### Exterior

Exterior Wood, Vinyl  
Exterior Features Cross Fenced, Cul-De-Sac, Fenced, Flat Site, Fruit Trees/Shrubs, Golf Nearby, No Back Lane, Public Transportation, Schools, Shopping Nearby  
Roof Asphalt Shingles  
Construction Wood, Vinyl  
Foundation Concrete Perimeter

### School Information

Elementary Jackson Heights, St Kateri

### Additional Information

Date Listed March 13th, 2025  
Days on Market 22

## Zoning

## Zone 29

DATA IS DEEMED RELIABLE BUT IS NOT GUARANTEED ACCURATE BY THE REALTORS® ASSOCIATION OF EDMONTON. COPYRIGHT 2025 BY THE REALTORS® ASSOCIATION OF EDMONTON. ALL RIGHTS RESERVED. Trademarks are owned or controlled by the Canadian Real Estate Association (CREA) and identify real estate professionals who are members of CREA (REALTOR®, REALTORS®) and/or the quality of services they provide (MLS®, Multiple Listing Service®)

Listing information last updated on April 4th, 2025 at 12:47pm MDT