

\$179,900 - 202 10125 83 Avenue, Edmonton

MLS® #E4425093

\$179,900

2 Bedroom, 1.00 Bathroom, 784 sqft

Condo / Townhouse on 0.00 Acres

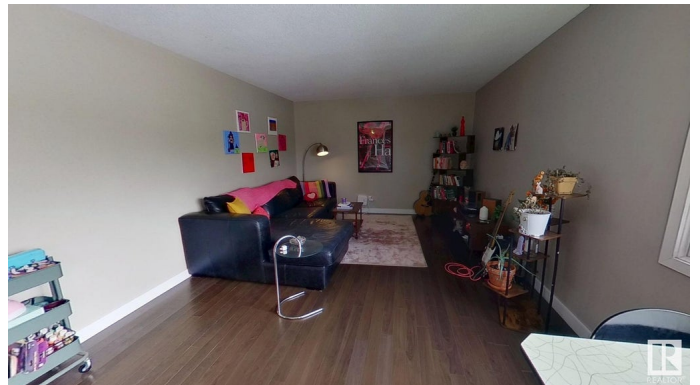
Strathcona, Edmonton, AB

Charming 2-Bedroom Condo – Prime Location Near U of A & Whyte Ave! This bright and inviting 2-bedroom unit is ideally situated just blocks from the University of Alberta, Whyte Avenue, the scenic river valley, and offers a quick commute to downtown Edmonton! Enjoy ample natural light, modern laminate flooring, and plenty of storage in this well-designed space. The kitchen and bathroom have been upgraded with a stylish tile backsplash and sleek stainless steel appliances, including a dishwasher. Plus, the covered carport adds extra convenience and protection for your vehicle. Nestled in the back of the building for added privacy, this unit offers a quiet retreat while still being steps away from shopping, schools, restaurants, and public transportation. Laundry facilities are conveniently located within the building, making daily routines a breeze.

Built in 1969

Essential Information

MLS® #	E4425093
Price	\$179,900
Bedrooms	2
Bathrooms	1.00
Full Baths	1
Square Footage	784



Acres	0.00
Year Built	1969
Type	Condo / Townhouse
Sub-Type	Lowrise Apartment
Style	Single Level Apartment
Status	Active

Community Information

Address	202 10125 83 Avenue
Area	Edmonton
Subdivision	Strathcona
City	Edmonton
County	ALBERTA
Province	AB
Postal Code	T6E 2C5

Amenities

Amenities	Intercom, No Smoking Home, Parking-Plug-Ins, Parking-Visitor
Parking	Single Carport

Interior

Appliances	Dishwasher-Built-In, Intercom, Microwave Hood Fan, Refrigerator, Stove-Electric, Window Coverings
Heating	Baseboard, Water
# of Stories	1
Stories	1
Has Basement	Yes
Basement	Full, Finished

Exterior

Exterior	Wood, Brick, Vinyl
Exterior Features	Landscaped, Playground Nearby, Public Transportation, Schools, Shopping Nearby
Roof	Tar & Gravel
Construction	Wood, Brick, Vinyl
Foundation	Concrete Perimeter

Additional Information

Date Listed	March 11th, 2025
-------------	------------------

Days on Market	40
Zoning	Zone 15
Condo Fee	\$619

DATA IS DEEMED RELIABLE BUT IS NOT GUARANTEED ACCURATE BY THE REALTORS® ASSOCIATION OF EDMONTON. COPYRIGHT 2025 BY THE REALTORS® ASSOCIATION OF EDMONTON. ALL RIGHTS RESERVED. Trademarks are owned or controlled by the Canadian Real Estate Association (CREA) and identify real estate professionals who are members of CREA (REALTOR®, REALTORS®) and/or the quality of services they provide (MLS®, Multiple Listing Service®)

Listing information last updated on April 19th, 2025 at 9:31pm MDT