

## \$849,000 - 6268 19 St, Rural Leduc County

MLS® #E4424738

**\$849,000**

5 Bedroom, 5.00 Bathroom, 2,647 sqft

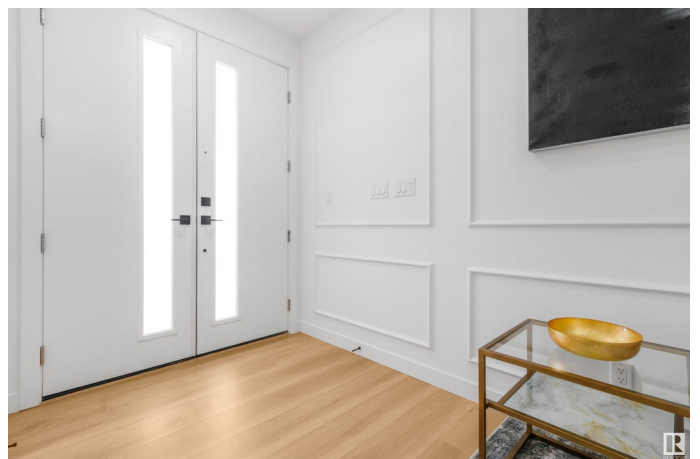
Rural on 0.06 Acres

Irvin Creek, Rural Leduc County, AB

WELCOME HOME !! QUICK POSSESSION in the highly coveted IRVIN CREEK community by SAMAR HOMES combining ELEGANCE AND CHARM. This home features TWO LIVING ROOMS with OPEN TO BELOW AT THE BACK, cozy fireplace and FEATURE WALLS, main floor DEN/OFFICE w/3Pc BATH. The exquisite EXTENDED KITCHEN w/Glass Cabinets is a true masterpiece, with WATERFALL island and a well-equipped SPICE KITCHEN. The Open to below WALL DESIGN, MUDROOM and the color theme is Wow! Elegant GLASS RAILING lead you to the upper floor, where you'll find a versatile BONUS room, a GRAND MASTER SUITE w/DOUBLE DOORS, a luxurious 5pc ENSUITE TUCKED AWAY with a spacious walk-in closet. 2 ADDITIONAL generous sized bedrooms and an upstairs laundry room with a SINK and cabinets that attaches to the MASTER complete the home. DECK is prebuilt too! This home also includes TWO FULLY FINISHED BASEMENTS: First with a TWO BED+3Pc BATH LEGAL SUITE, ideal for renters & Second is an OWNERS SUITE w/wetbar and 3Pc BATH ideal for SHORT TERM RENTAL/AIRBNB.

Built in 2024

### Essential Information



MLS® #	E4424738
Price	\$849,000
Bedrooms	5
Bathrooms	5.00
Full Baths	5
Square Footage	2,647
Acres	0.06
Year Built	2024
Type	Rural
Sub-Type	Detached Single Family
Style	2 Storey
Status	Active

### **Community Information**

Address	6268 19 St
Area	Rural Leduc County
Subdivision	Irvin Creek
City	Rural Leduc County
County	ALBERTA
Province	AB
Postal Code	T4X 3C8

### **Amenities**

Features	Ceiling 9 ft., Closet Organizers, Deck, Detectors Smoke
----------	---

### **Interior**

Interior Features	ensuite bathroom
Heating	Forced Air-1, Natural Gas
Stories	3
Has Basement	Yes
Basement	Full, Finished

### **Exterior**

Exterior	Wood
Exterior Features	Park/Reserve, Playground Nearby
Construction	Wood
Foundation	Concrete Perimeter

### **Additional Information**

Date Listed March 7th, 2025

Days on Market 28

Zoning Zone 80

DATA IS DEEMED RELIABLE BUT IS NOT GUARANTEED ACCURATE BY THE REALTORS® ASSOCIATION OF EDMONTON. COPYRIGHT 2025 BY THE REALTORS® ASSOCIATION OF EDMONTON. ALL RIGHTS RESERVED. Trademarks are owned or controlled by the Canadian Real Estate Association (CREA) and identify real estate professionals who are members of CREA (REALTOR®, REALTORS®) and/or the quality of services they provide (MLS®, Multiple Listing Service®)

Listing information last updated on April 4th, 2025 at 6:47am MDT