

\$158,000 - 807 9918 101 Street, Edmonton

MLS® #E4424701

\$158,000

1 Bedroom, 1.00 Bathroom, 584 sqft
Condo / Townhouse on 0.00 Acres

Downtown (Edmonton), Edmonton, AB

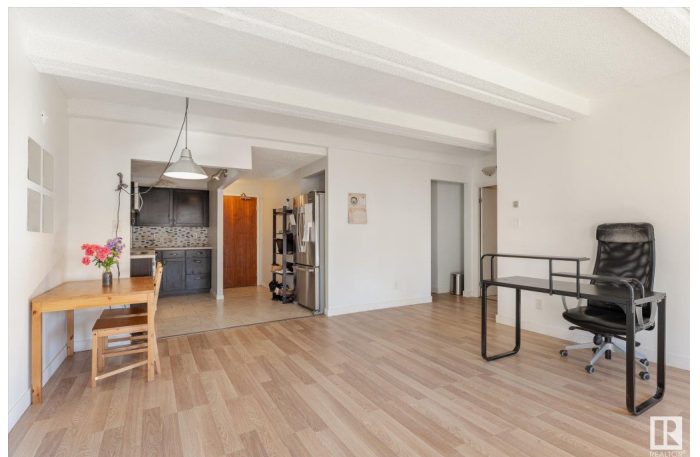
Prime Location with Stunning River Valley Views. Conveniently located just off Macdougall Hill Road and Rosssdale Road, this beautiful one-bedroom, one-bathroom unit is perfectly positioned to get you downtown or south of the river in minutes. Enjoy breathtaking west-facing views of the Walterdale Bridge and Edmonton's iconic River Valley from both the living room and spacious primary bedroom – each with access to a massive balcony that floods the unit with natural light. Updated over the years, this unit features shaker-style cabinets, stainless steel appliances, and laminate flooring throughout. The building's top-tier amenities include an indoor pool, hot-tub, and full lounge area all overlooking the River Valley. Not far from the pool is a full gym, sauna, and games room with billiards. Each floor offers laundry facilities and a garbage chute for added convenience. Complete with one titled heated underground parking stall, this unit offers everything you need for urban living with nature at your doorstep

Built in 1978

Essential Information

MLS® # E4424701

Price \$158,000



Bedrooms	1
Bathrooms	1.00
Full Baths	1
Square Footage	584
Acres	0.00
Year Built	1978
Type	Condo / Townhouse
Sub-Type	Apartment High Rise
Style	Single Level Apartment
Status	Active

Community Information

Address	807 9918 101 Street
Area	Edmonton
Subdivision	Downtown (Edmonton)
City	Edmonton
County	ALBERTA
Province	AB
Postal Code	T5K 2G1

Amenities

Amenities	Off Street Parking, On Street Parking, Intercom, No Animal Home, Party Room, Patio, Pool-Indoor, Recreation Room/Centre, Sauna; Swirlpool; Steam, Secured Parking, Social Rooms, Storage-In-Suite, Sunroom
Parking Spaces	1
Parking	Heated, Parkade, Underground
Has Pool	Yes

Interior

Appliances	Dishwasher-Built-In, Refrigerator, Stove-Electric
Heating	Baseboard, Natural Gas
# of Stories	19
Stories	1
Has Basement	Yes
Basement	None, No Basement

Exterior

Exterior	Concrete
Exterior Features	Hillside, Paved Lane, Public Transportation, River Valley View, Shopping

Nearby, View City, View Downtown

Roof	SBS Roofing System
Construction	Concrete
Foundation	Concrete Perimeter

Additional Information

Date Listed	March 7th, 2025
Days on Market	36
Zoning	Zone 12
Condo Fee	\$448

DATA IS DEEMED RELIABLE BUT IS NOT GUARANTEED ACCURATE BY THE REALTORS® ASSOCIATION OF EDMONTON. COPYRIGHT 2025 BY THE REALTORS® ASSOCIATION OF EDMONTON. ALL RIGHTS RESERVED. Trademarks are owned or controlled by the Canadian Real Estate Association (CREA) and identify real estate professionals who are members of CREA (REALTOR®, REALTORS®) and/or the quality of services they provide (MLS®, Multiple Listing Service®)

Listing information last updated on April 12th, 2025 at 1:17am MDT