

Courtesy Of David Lam Of Exp Realty

# \$575,000 - 9816 64 Avenue, Edmonton

MLS® #E4424439

**\$575,000**

3 Bedroom, 2.00 Bathroom, 950 sqft  
Single Family on 0.00 Acres

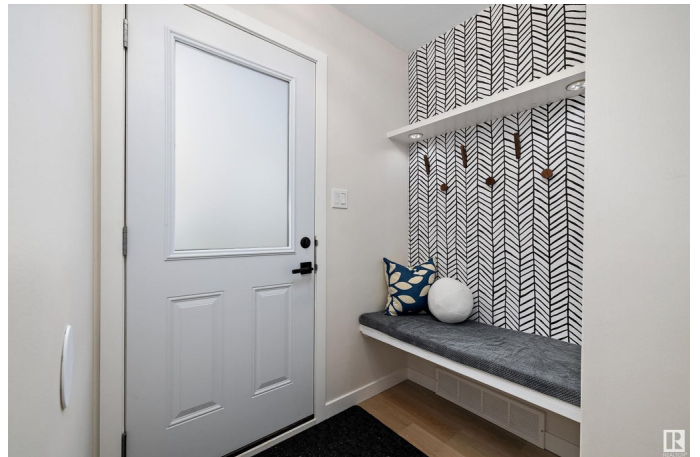
Hazeldean, Edmonton, AB

This beautifully renovated 950 SqFt bungalow sits on a 47' x 140' (615 SqM) lot in sought-after Hazeldean. The spacious main floor boasts brand-new luxury vinyl plank flooring, an open-concept living area, two bright bedrooms & an upgraded 4-piece bath. The stunning new kitchen features modern finishes & high-end appliances, including a WOLF induction cooktop, dual built-in oven, and Miele built-in dishwasher, seamlessly flowing into the living space. Downstairs, the 1-bedroom in-law suite offers a separate entrance, full kitchen, bathroom, and cozy living area, perfect for extended family or extra flexibility. Recent upgrades include new windows(2025), shingles(2024), furnace(2025), hot water tank (2019) & fresh finishes throughout. Outside, enjoy a huge backyard with new sod, deck, back fence all new in 2024 and oversized double garage with new doors (2024). Nestled on a tree-lined street, you're minutes from the ravine, U of A, downtown, and transit. A designer's dream—don't miss this one!

Built in 1955

## Essential Information

MLS® #	E4424439
Price	\$575,000



Bedrooms	3
Bathrooms	2.00
Full Baths	2
Square Footage	950
Acres	0.00
Year Built	1955
Type	Single Family
Sub-Type	Detached Single Family
Style	Bungalow
Status	Active

### **Community Information**

Address	9816 64 Avenue
Area	Edmonton
Subdivision	Hazeldean
City	Edmonton
County	ALBERTA
Province	AB
Postal Code	T6E 0J5

### **Amenities**

Amenities	See Remarks
Parking	Double Garage Detached, Over Sized

### **Interior**

Appliances	Dryer, Fan-Ceiling, Garage Opener, Hood Fan, Stove-Electric, Washer, Refrigerators-Two, Dishwasher-Two, Oven Built-In-Two, Stove-Countertop Inductn
Heating	Forced Air-1, Natural Gas
Stories	2
Has Basement	Yes
Basement	Full, Finished

### **Exterior**

Exterior	Wood, Stucco
Exterior Features	Fenced, Landscaped, Paved Lane, Public Transportation, Schools
Roof	Asphalt Shingles
Construction	Wood, Stucco
Foundation	Concrete Perimeter

## Additional Information

Date Listed March 6th, 2025

Days on Market 30

Zoning Zone 17

DATA IS DEEMED RELIABLE BUT IS NOT GUARANTEED ACCURATE BY THE REALTORS® ASSOCIATION OF EDMONTON. COPYRIGHT 2025 BY THE REALTORS® ASSOCIATION OF EDMONTON. ALL RIGHTS RESERVED. Trademarks are owned or controlled by the Canadian Real Estate Association (CREA) and identify real estate professionals who are members of CREA (REALTOR®, REALTORS®) and/or the quality of services they provide (MLS®, Multiple Listing Service®)

Listing information last updated on April 5th, 2025 at 3:32pm MDT