

\$399,000 - 15236 86 Avenue, Edmonton

MLS® #E4421403

\$399,000

4 Bedroom, 2.00 Bathroom, 1,049 sqft
Single Family on 0.00 Acres

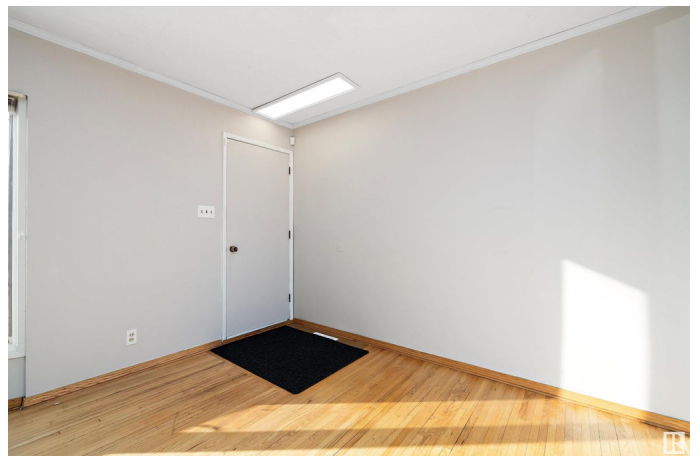
Lynnwood, Edmonton, AB

Welcome to 15236 86 Ave in Lynnwood, a fantastic opportunity for first-time buyers, families, or couples looking to add their own touch. This 1959 bungalow offers 1,049 sq. ft. of potential with three bright bedrooms, a functional u-shaped kitchen, and a dining area that opens to a private backyard—great for kids, pets, or summer BBQs. The fully finished basement adds versatility with an extra bedroom and a spacious rec room. While some updates are needed, key improvements like newer windows, a newer furnace, and a recently replaced roof provide a solid foundation. The standout feature? A rare oversized 26x30 ft. detached garage, the size of a mini shop! With alley and front driveway access, this is a dream for hobbyists, mechanics, or extra storage. Located close to schools, parks, and shopping, this is a great chance to invest, build equity, and make it your own!

Built in 1959

Essential Information

| | |
|------------|-----------|
| MLS® # | E4421403 |
| Price | \$399,000 |
| Bedrooms | 4 |
| Bathrooms | 2.00 |
| Full Baths | 2 |



| | |
|----------------|------------------------|
| Square Footage | 1,049 |
| Acres | 0.00 |
| Year Built | 1959 |
| Type | Single Family |
| Sub-Type | Detached Single Family |
| Style | Bungalow |
| Status | Active |

Community Information

| | |
|-------------|-----------------|
| Address | 15236 86 Avenue |
| Area | Edmonton |
| Subdivision | Lynnwood |
| City | Edmonton |
| County | ALBERTA |
| Province | AB |
| Postal Code | T5R 4C3 |

Amenities

| | |
|-----------|---|
| Amenities | Deck |
| Parking | Double Garage Detached, Over Sized, See Remarks |

Interior

| | |
|--------------|---|
| Appliances | Dryer, Refrigerator, Stove-Electric, Washer |
| Heating | Forced Air-1, Natural Gas |
| Stories | 2 |
| Has Basement | Yes |
| Basement | Full, Finished |

Exterior

| | |
|-------------------|--|
| Exterior | Wood, Fiber Cement, Vinyl |
| Exterior Features | Fenced, Landscaped, Schools, Shopping Nearby |
| Roof | Metal |
| Construction | Wood, Fiber Cement, Vinyl |
| Foundation | Concrete Perimeter |

Additional Information

| | |
|----------------|---------------------|
| Date Listed | February 13th, 2025 |
| Days on Market | 29 |
| Zoning | Zone 22 |

DATA IS DEEMED RELIABLE BUT IS NOT GUARANTEED ACCURATE BY THE REALTORS® ASSOCIATION OF EDMONTON. COPYRIGHT 2025 BY THE REALTORS® ASSOCIATION OF EDMONTON. ALL RIGHTS RESERVED. Trademarks are owned or controlled by the Canadian Real Estate Association (CREA) and identify real estate professionals who are members of CREA (REALTOR®, REALTORS®) and/or the quality of services they provide (MLS®, Multiple Listing Service®)

Listing information last updated on March 14th, 2025 at 5:47pm MDT