

\$649,000 - 26225 Twp 511, Rural Parkland County

MLS® #E4415561

\$649,000

0 Bedroom, 0.00 Bathroom,
Rural on 17.80 Acres

None, Rural Parkland County, AB

Incredible 17.8 Acres! Prime Location with Stunning River View and backing onto a Natural Conservation District, ensuring privacy and beauty. Zoned as Country Residential, this property offers subdivision potential and has already been approved for an RV storage site. The property features new electrical, easy access to Highway 60, and is just a stone's throw from the town of Devon the U of A Botanical Gardens. A rare find, this affordable gem is priced to sell – the perfect place to build your dream home or explore various opportunities!

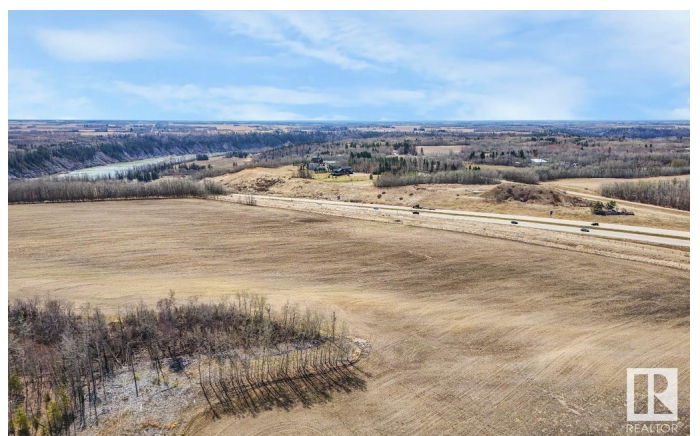


Essential Information

MLS® #	E4415561
Price	\$649,000
Bathrooms	0.00
Acres	17.80
Type	Rural
Sub-Type	Vacant Lot/Land
Status	Active

Community Information

Address	26225 Twp 511
Area	Rural Parkland County
Subdivision	None
City	Rural Parkland County



County	ALBERTA
Province	AB
Postal Code	T7Y 1C6

Exterior

Exterior Features Cul-De-Sac, River View, Shopping Nearby, Subdividable Lot, See Remarks

Additional Information

Date Listed	December 5th, 2024
Days on Market	120
Zoning	Zone 90

DATA IS DEEMED RELIABLE BUT IS NOT GUARANTEED ACCURATE BY THE REALTORS® ASSOCIATION OF EDMONTON. COPYRIGHT 2025 BY THE REALTORS® ASSOCIATION OF EDMONTON. ALL RIGHTS RESERVED. Trademarks are owned or controlled by the Canadian Real Estate Association (CREA) and identify real estate professionals who are members of CREA (REALTOR®, REALTORS®) and/or the quality of services they provide (MLS®, Multiple Listing Service®)

Listing information last updated on April 4th, 2025 at 2:32pm MDT