

\$59,900 - 4831 52 Avenue, Tofield

MLS® #E4400214

\$59,900

0 Bedroom, 0.00 Bathroom,
Single Family on 0.00 Acres

Tofield, Tofield, AB

100' x 150' vacant, fully serviced lot with back alley access in the community of Tofield. Zoned residential- low density which allows for single family home or a duplex. **Town of Tofield offers residential tax rebate for new builds! Excellent location- walking distance to all downtown amenities. Great building opportunity!

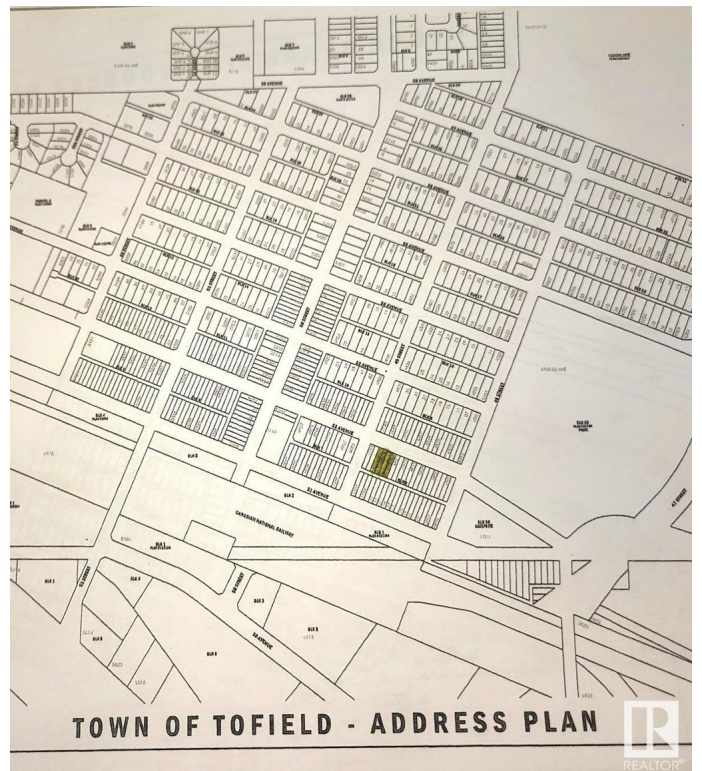
Essential Information

| | |
|-----------|-----------------|
| MLS® # | E4400214 |
| Price | \$59,900 |
| Bathrooms | 0.00 |
| Acres | 0.00 |
| Type | Single Family |
| Sub-Type | Vacant Lot/Land |
| Status | Active |

Community Information

| | |
|-------------|----------------|
| Address | 4831 52 Avenue |
| Area | Tofield |
| Subdivision | Tofield |
| City | Tofield |
| County | ALBERTA |
| Province | AB |
| Postal Code | T0B 4J0 |

Exterior



Exterior Features Back Lane, Flat Site, Shopping Nearby, See Remarks

School Information

| | |
|------------|----------------|
| Elementary | C.W.Sears(K-4) |
| Middle | Tofield(5-9) |
| High | Tofield |

Additional Information

| | |
|----------------|------------------|
| Date Listed | August 1st, 2024 |
| Days on Market | 246 |
| Zoning | Zone 80 |

DATA IS DEEMED RELIABLE BUT IS NOT GUARANTEED ACCURATE BY THE REALTORS® ASSOCIATION OF EDMONTON. COPYRIGHT 2025 BY THE REALTORS® ASSOCIATION OF EDMONTON. ALL RIGHTS RESERVED. Trademarks are owned or controlled by the Canadian Real Estate Association (CREA) and identify real estate professionals who are members of CREA (REALTOR®, REALTORS®) and/or the quality of services they provide (MLS®, Multiple Listing Service®)

Listing information last updated on April 4th, 2025 at 2:17pm MDT